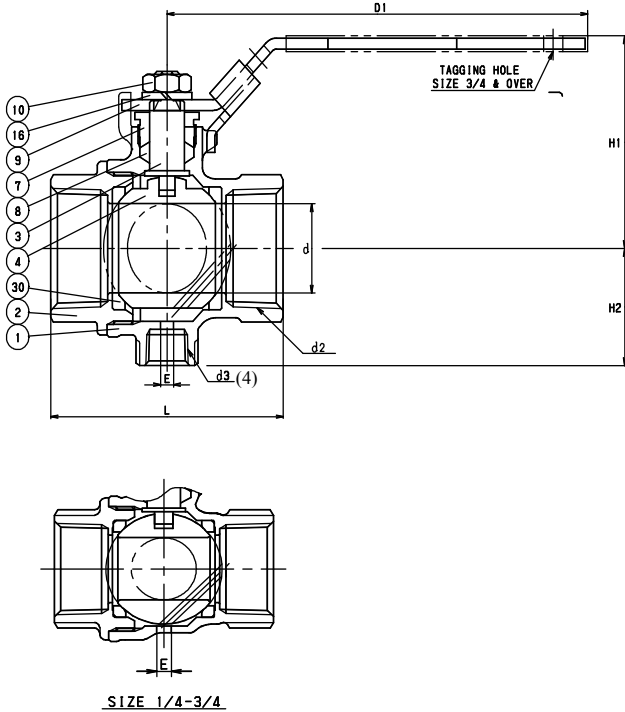


# FORGED BRASS BALL VALVE

## SAFETY EXHAUST

Two Piece Body • Full Port • Blowout Proof Stem  
 Chrome Plated Ball • PTFE Seats and Seals • Locking Lever Handle

### CODE # 68S (AKTAFS) THREADED



SIZE 1/4-3/4

#### STANDARDS

|                        |              |
|------------------------|--------------|
| END TO END             | KITZ         |
| END CONNECTION         | ANSI B1.20.1 |
| WALL THICKNESS         | KITZ         |
| CONFORMS TO MSS-SP 110 |              |

#### PRESSURE/TEMPERATURE

200 PSI NON-SHOCK COLD WATER, AIR & WATER

NOTE: PRESSURE/TEMPERATURE CHART - PAGE BV-35

#### MATERIAL LIST

| NO. | NAME OF PART  | SPECIFICATION                      |
|-----|---------------|------------------------------------|
| 1   | BODY          | FORGED BRASS (B283, C37700)        |
| 2   | BODY CAP      | FORGED BRASS (B283, C37700)        |
| 3   | STEM          | (1) SPECIAL BRASS (KITZ "K" METAL) |
| 4   | BALL          | (2) FORGED BRASS (B283, C37700)    |
| 7   | GLAND         | BRASS ROD (B16)                    |
| 8   | GLAND PACKING | PTFE                               |
| 9   | HANDLE        | (3) CARBON STEEL                   |
| 10  | HANDLE NUT    | CARBON STEEL                       |
| 16  | SPRING WASHER | CARBON STEEL                       |
| 30  | BALL SEATS    | PTFE                               |

NOTES: (1) PROPRIETARY DEZINCIFICATION RESISTANT MATERIAL.  
 (2) CR. PLATING  
 (3) ELECTROPLATED ZINC WITH PLASTIC COVERING  
 (4) 1/4" EXHAUST PORT (d3-1" - 2")  
 EXHAUST MUFFLER AVAILABLE - OSHA: 1910:147 COMPLIANT

| DIMENSIONS • WEIGHTS • QUANTITIES |            |      |      |      |       |       |      |                    |               |
|-----------------------------------|------------|------|------|------|-------|-------|------|--------------------|---------------|
|                                   | d2<br>SIZE | d    | H1   | H2   | D1    | L     | E    | APPROX.<br>NET WT. | CARTON<br>QTY |
| in.                               | 1/4        | 0.31 | 1.54 | -    | 3.23  | 1.61  | 0.16 | 48                 | 120           |
| mm.                               |            | 7.9  | 39.1 | -    | 82.0  | 40.9  | 4.1  | 21.8               |               |
| in.                               | 3/8        | 0.31 | 1.54 | -    | 3.23  | 1.65  | 0.16 | 49                 | 120           |
| mm.                               |            | 7.9  | 39.1 | -    | 82.0  | 41.9  | 4.1  | 22.3               |               |
| in.                               | 1/2        | 0.51 | 1.65 | -    | 3.23  | 2.09  | 0.16 | 52                 | 96            |
| mm.                               |            | 12.7 | 41.9 | -    | 82.0  | 53.1  | 4.1  | 23.6               |               |
| in.                               | 3/4        | 0.71 | 2.01 | -    | 3.94  | 2.36  | 0.16 | 50                 | 60            |
| mm.                               |            | 18.0 | 51.1 | -    | 100.1 | 59.9  | 4.1  | 22.7               |               |
| in.                               | 1          | 0.91 | 2.32 | 1.28 | 5.12  | 2.83  | 0.16 | 51                 | 36            |
| mm.                               |            | 23.1 | 58.9 | 32.5 | 130.0 | 71.9  | 4.1  | 23.2               |               |
| in.                               | 1 1/4      | 1.26 | 2.52 | 1.5  | 5.12  | 3.23  | 0.16 | 50                 | 24            |
| mm.                               |            | 32.0 | 64.0 | 38.1 | 130.0 | 82.0  | 4.1  | 22.7               |               |
| in.                               | 1 1/2      | 1.57 | 2.87 | 1.73 | 5.91  | 3.62  | 0.16 | 54                 | 16            |
| mm.                               |            | 39.9 | 72.9 | 43.9 | 150.1 | 91.9  | 4.1  | 24.5               |               |
| in.                               | 2          | 1.97 | 3.15 | 2.05 | 5.91  | 4.13  | 0.16 | 72                 | 16            |
| mm.                               |            | 50.0 | 80.0 | 52.1 | 150.1 | 104.9 | 4.1  | 32.7               |               |

#### SPECIFICATION

Approved valve shall have two piece forged brass body with safety exhaust, blowout proof stem, PTFE seats/seals, chrome plated ball, and full port design. Valves shall be pressure rated to 200 WOG and conform to MSS-SP 110.

KITZ Code No. 68S (AKTAFS) Threaded Ends