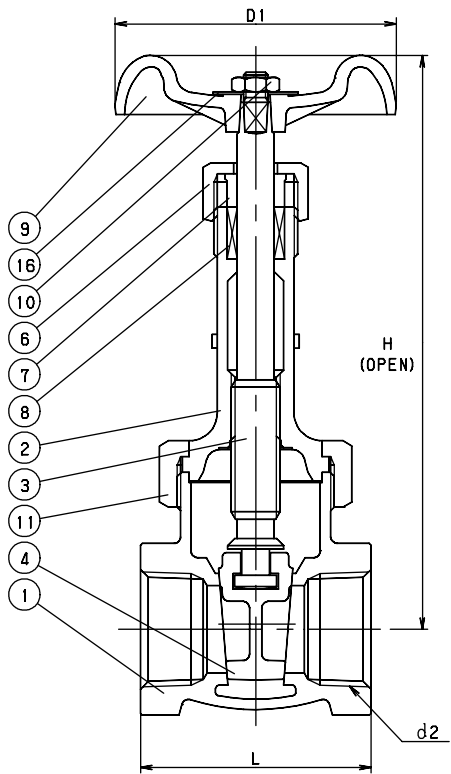


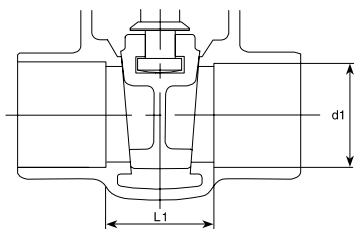
# GATE CLASS 150 BRONZE

Union Bonnet • Rising Stem  
Solid Wedge Disc

➔ **CODE # 42T (AK150LUT)  
THREADED**



**CODE # 43 (C150LU)  
SOLDER\***



STANDARDS	
END TO END	KITZ
THREADED ENDS	ANSI B1.20.1
SOLDER JOINT ENDS	ANSI B16.18
DESIGN	MSS SP-80, TYPE 2
MILITARY	MSS SP-80, TYPE 2

PRESSURE/TEMPERATURE
150 PSI - SATURATED STEAM TO 366°F - FLUID TO 406°F
300 PSI NON-SHOCK COLD WATER, OIL OR GAS

*\*SEE PRESSURE/TEMPERATURE LIMITATIONS FOR SOLDER JOINT VALVES - PAGE BIV-50.*

MATERIAL LIST		
NO.	NAME OF PART	SPECIFICATION
1	BODY	CAST BRONZE (ASTM B62)
2	BONNET	CAST BRONZE (ASTM B62)
3	STEM	CAST BRONZE (ASTM B62)
4	DISC	CAST BRONZE (ASTM B62)
6	PACKING NUT	FORGED BRASS (B283, C37700)
7	GLAND	BRASS ROD (B16)
8	GLAND PACKING	ARAMID FIBERS PTFE
9	HAND WHEEL (3/8 - 1) (1 1/4 - 2)	ZINC DIE-CAST (B86) ALUMINUM DIE-CAST (B85)
10	WHEEL NUT	BRASS ROD
11	BONNET RING	CAST BRONZE (B62)
16	NAME PLATE	ALUMINUM
* OPTION AVAILABLE: GRAPHOIL PACKING		

DIMENSIONS - WEIGHTS - QUANTITIES								
d2 SIZE	H	D1	L	L1	d1		APPROX. NET WT.	CARTON QTY
					Max.	Min.		
1/4	4.25	1.97	1.77	-	-	-	0.88	60
3/8	4.25	1.97	1.81	-	-	-	0.88	60
1/2	5.39	2.17	2.01	.93	.631	.627	1.13	48
3/4	6.18	2.76	2.20	1.02	.881	.877	1.64	36
1	7.09	2.76	2.60	1.17	1.132	1.124	2.46	24
1 1/4	8.50	3.15	2.68	1.29	1.382	1.378	3.50	16
1 1/2	10.12	3.54	2.91	1.21	1.633	1.628	4.84	12
2	11.65	3.94	3.31	1.61	2.133	2.128	7.25	8